



BLE DALI controller Installation guide

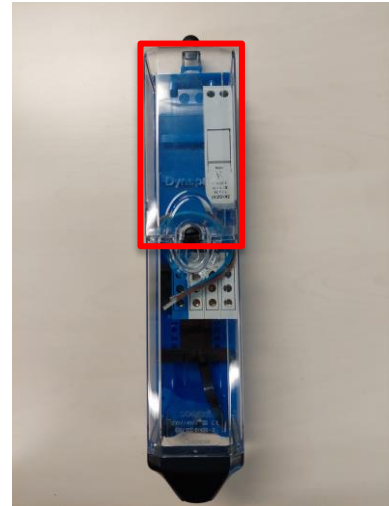


📍 Kraaivenstraat 25-41, 5048AB Tilburg Nederland

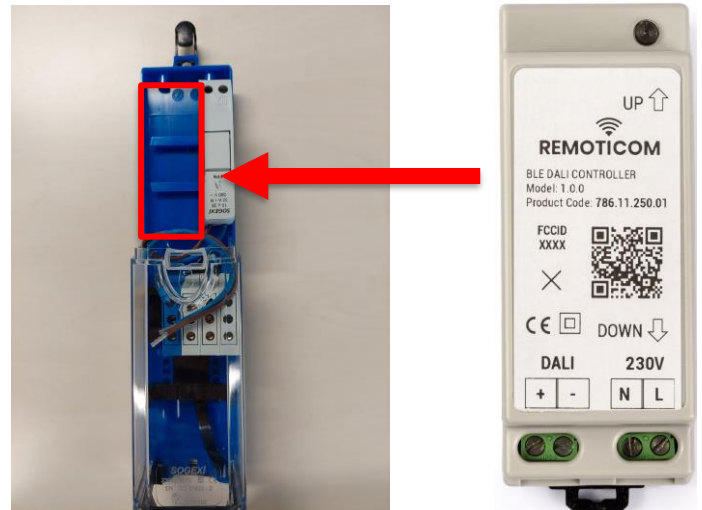
✉ support@remoticom.com 🌐 www.remoticom.com

To install the **BLE DALI controller**, follow the simple steps in this guide:

1. The controller is intended to be installed in a din-rail casing inside a lighting pole, protected from water and dust ingress, depicted on the right.
2. Remove the top part of this casing to install the controller.



3. The arrows on the label indicate which side of the controller goes up. Please note that the controller is mounted such that the green connectors are at the bottom.
4. Place the controller in the casing by clicking it on the plastic din-rail, in the position marked on the right.



5. Connect the wires to the controller. the connections from left to right are shown in the image to the right:

Please note that in case of a D4i driver, there is a specific +/- indication. Make sure you connect accordingly.

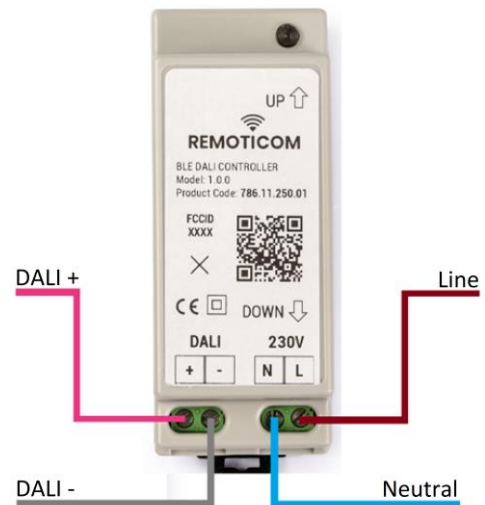
Wire and stripping specifications:

SOLID WIRE: 30-14 AWG / 0,05-2,08 mm²

STRANDED WIRE: 30-14 AWG / 0,05-2,08 mm²

Wire strip length is 6 mm

Maximal torque is 0.5 Nm



6. After correctly connecting and powering the controller, the LED (marked in red on the side) will turn on shortly and then remain off.



7. Configuration of the controller is possible via the app "BLE DALI CONTROLLER". This App can be found in the Google Play store and can only be used with an Android phone.

As long as the controller is connected to the App the luminaire will blink

